

For Lease

1,500-10,000 SF
First Floor Retail in
Mixed Use Area



University Place

2345-2401 N 48th Street.
Lincoln, NE 68504

For more information:

Chris Vasek

402 441 5833 • cvasek@naifma.com

Marc Hausmann

402 441 5834 • mhausmann@naifma.com

Property Features

- New retail/residential development opening Summer 2018
- 187 Residential units (mixture of 1 & 2 bedroom & studio apartments)
- 1,500-10,000 SF retail bays
- 5,300 SF available now in existing building
- Design includes a pedestrian plaza/ event area, fitness center, balconies, & swimming pool
- Close to Wesleyan University, which has an enrollment of 2,000 students, & University of Nebraska-Lincoln East Campus



Wells Fargo Center
1248 'O' Street, Suite 550
Lincoln, NE 68508
402 441 5800

naifmarealty.com

For Lease
University Place
Lincoln, NE



Location Advantages

- Great central location close to two universities & an under-served residential area
- Great pedestrian friendly design with a large designated parking area
- 187 residential units on-site
- Affordable lease rates @ \$16.00-\$18.00/SF NNN
- High-quality design and construction
- TI packages available
- Temperature controlled shell

Wells Fargo Center
1248 'O' Street, Suite 550
Lincoln, NE 68508
402 441 5800
naifmarealty.com

NAIFMA Realty

city|ventures

For Lease

University Place Lincoln, NE

Location Map



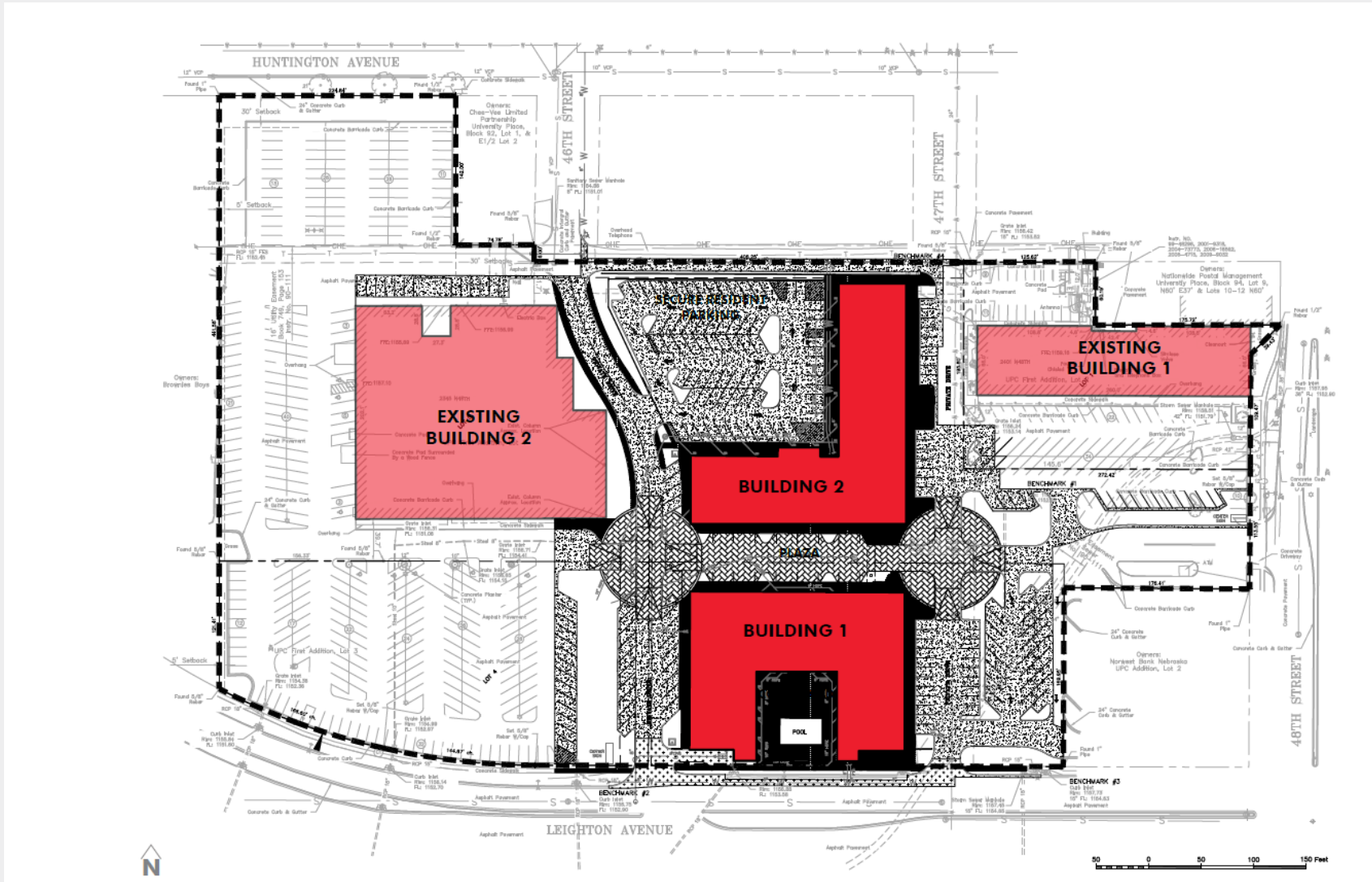
Wells Fargo Center
1248 'O' Street, Suite 550
Lincoln, NE 68508
402 441 5800
naifmarealty.com



For Lease

University Place
Lincoln, NE

Site Plan



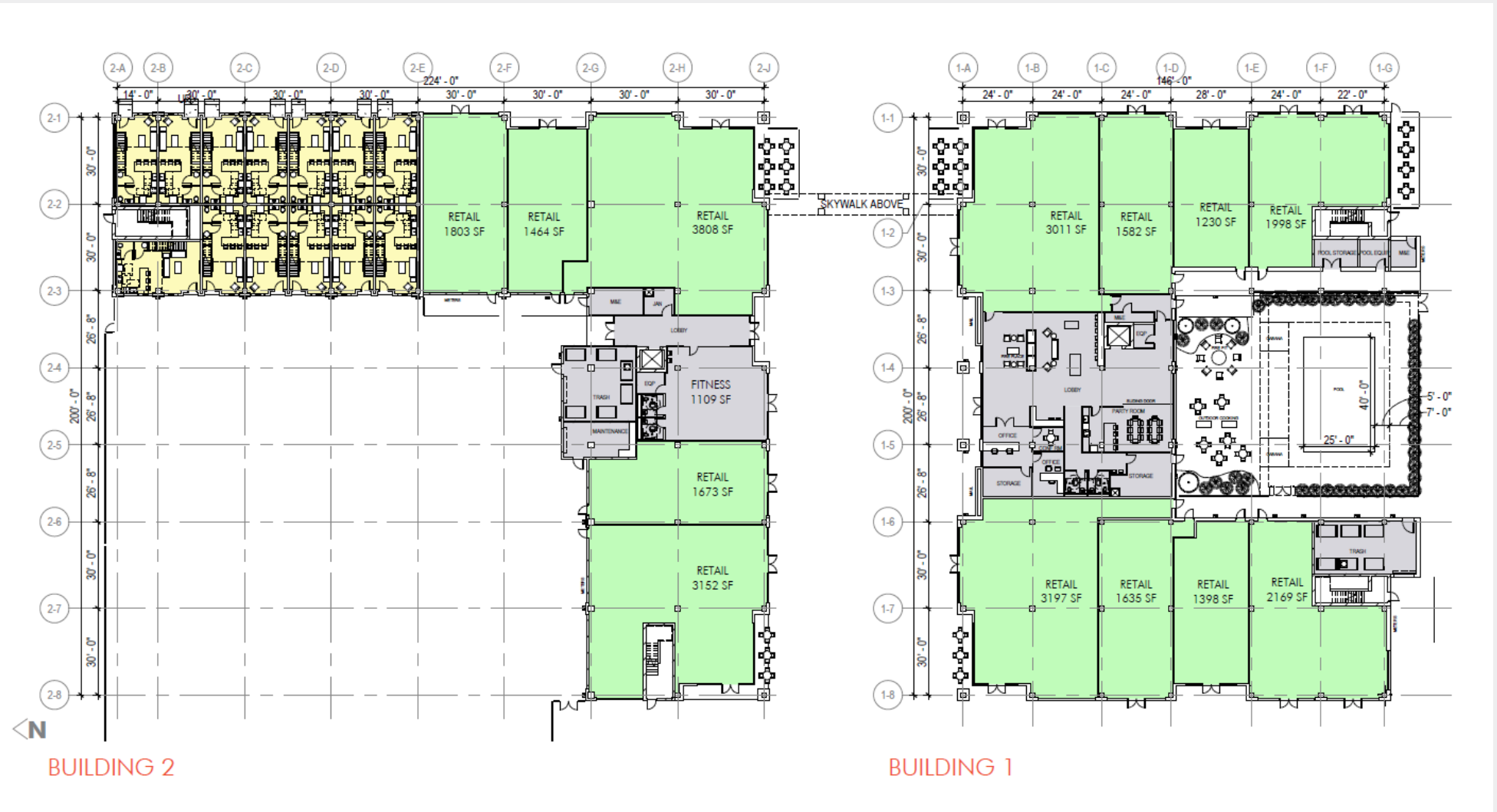
Wells Fargo Center
1248 'O' Street, Suite 500
Lincoln, NE 68508
402 441 5800
naifmarealty.com



For Lease

University Place
Lincoln, NE

Floor Plan



Wells Fargo Center
1248 'O' Street, Suite 550
Lincoln, NE 68508
402 441 5800
naifmarealty.com